

# Thermostatic Expansion Valve

## for Replacement of Adjustable Bottom Cap Assemblies or for Converting Non-Adjustable Valves to Adjustable Type

### Installation Instructions

1. Before disassembling the TEV, be sure the refrigerant pressure in the system has been reduced to a safe level (0 psig).
2. If the valve is non-adjustable, remove non-adjustable **bottom cap and spring guide** and discard both parts. If the valve is adjustable, remove seal cap, bottom cap assembly, and spring guide (if applicable) and discard these parts.
3. Install new spring guide (if applicable), adjustable bottom cap assembly and seal cap furnished with kit. Adjustable bottom assemblies for Types A, BBI, BF, BQ, CBBI, CBI, EBF, EBQ, EF, EQ, F, FB, K, M, O, RC, SBF, SBQ, SQ, V and W thermostatic expansion valves use a non-rising stem construction, and the spring guide is an integral part of the assembly. Refer to exploded views on the back of this sheet.

Note: Replacing internal parts on expansion valves can be quite difficult if these valves have been installed on their side, i.e., the bottom cap is neither above nor below the valve's thermostatic element (power head).

4. With the system operating, check the superheat, (see enclosed Temperature-Pressure card), and adjust the valve if necessary. Install and tighten seal cap, this cap is the primary seal.



© COPYRIGHT 2000 BY SPORLAN VALVE COMPANY, WASHINGTON, MO

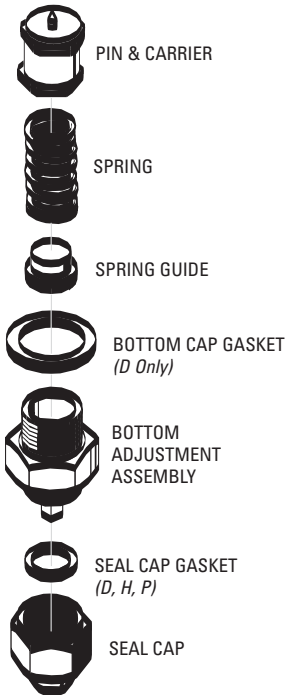
# Valve Adjustment for Bottom Cap Assemblies

**KA-2** for Valve Type D

**KA-3** for Valve Types H, P

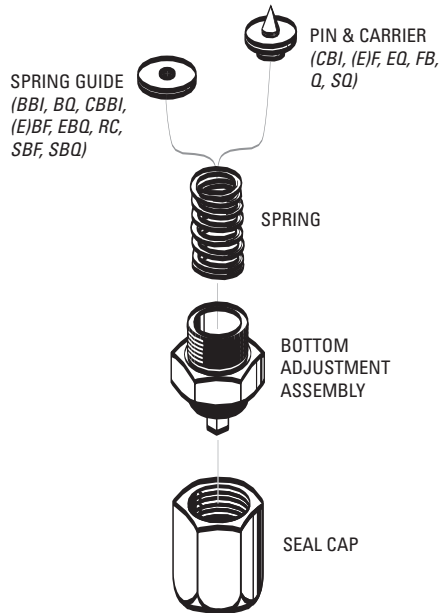
**KA-8** for Valve Types C, EBS, (E)G, (E)MC, S

**KA-5X** for Valve Type X\*



**KA-4** for Valve Types BBI\*, (E)BF, (E)BQ,  
(E)F, (E)Q, FB, SBF, SBQ, SQ

**KA-Y1132** for Valve Types CBBI\*, CBI, RC

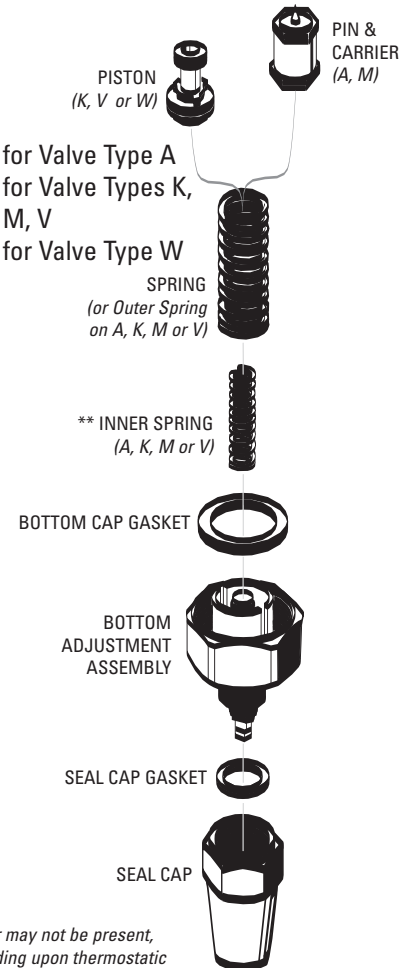


\* For straight through connections ONLY

**KA-1** for Valve Type A

**KA-6** for Valve Types K, M, V

**KA-7** for Valve Type W



\*\* May or may not be present, depending upon thermostatic charge used with valve.