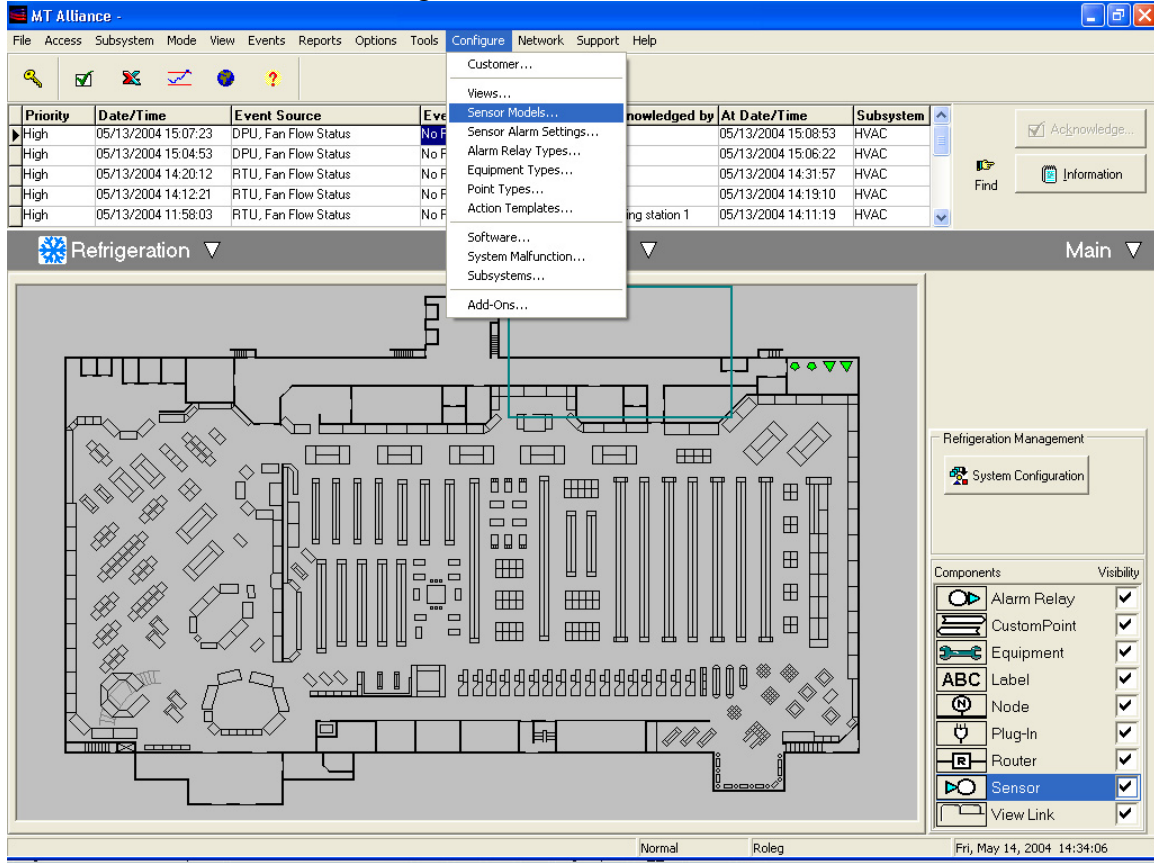
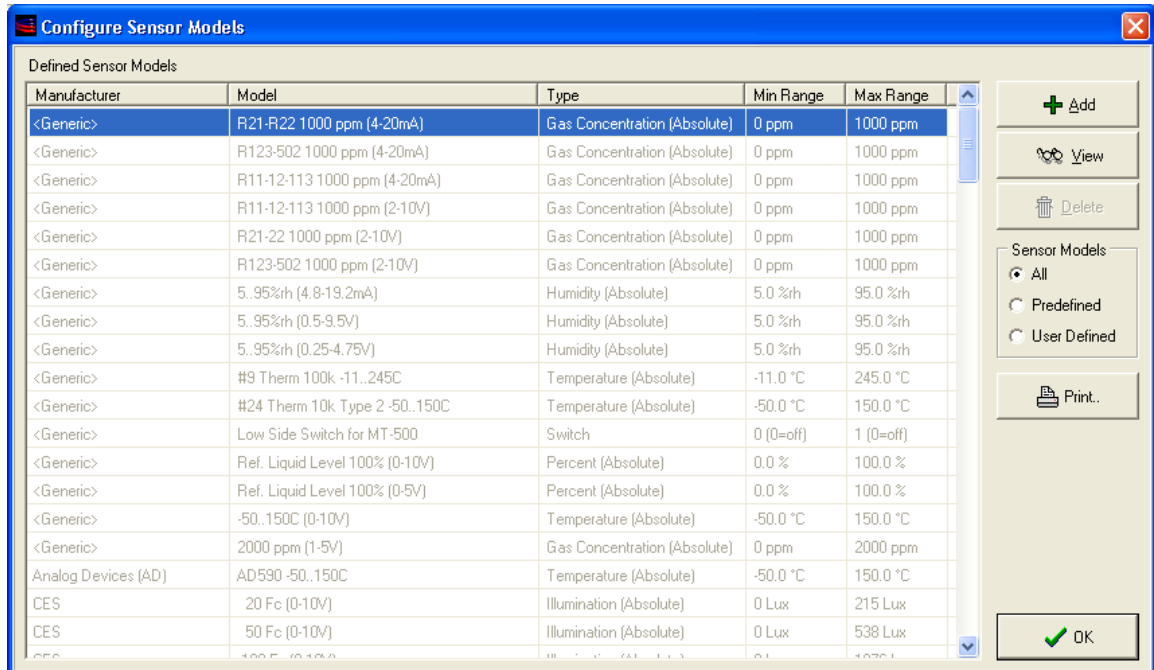


How to add the 023-0345 CO sensor model in MT Alliance V5.2

Click Sensor Model in the configure menu



Click Add



Fill the form as described below

Sensor Model - "Micro Thermo 023-0345 CO 100 ppm (2-10V)"

Manufacturers: Micro Thermo
Model: 023-0345 CO 100 ppm (2-10V)
Diagram: Alliance\Images\Sensor Models\MT Gas Detector 2-10V 3RD.bmp

Wireless: Can be Wireless

Type:
Physical: Gas Concentration
Electrical: 0-10V
Absolute: Differential:
Time Constant: 1 s

Properties:
Max Range: 100 ppm
Min Range: 0 ppm
Max Offset: ± 10 ppm (0 to 20% of total range (Default: 2%))

Network:
Max Send Time: 00:00:30
Min Send Time: 00:00:03
Send On Delta: 1 ppm

Point 1 (Ref): 9.5 V at 100 ppm
Point 2: 1.86 V at 0 ppm

OK Cancel

Once completed you won't have to repeat this step again for this site.

To drop the 023-0345 CO sensor in a view, zoom in the appropriate view
Drag and drop a sensor from the Component box
Make the following selection and click OK.

Pick Sensor Type and Model

Physical Type:
Name: Gas Concentration
Absolute: Differential:

Source:
Local: Remote:

Manufacturer: Micro Thermo
Sensor Model: 023-0345 CO 100 ppm (2-10V)

OK Cancel

Click on the new button and configure the name, the alarm limits and the sensor node input

This sensor won't be available for a plug-in.