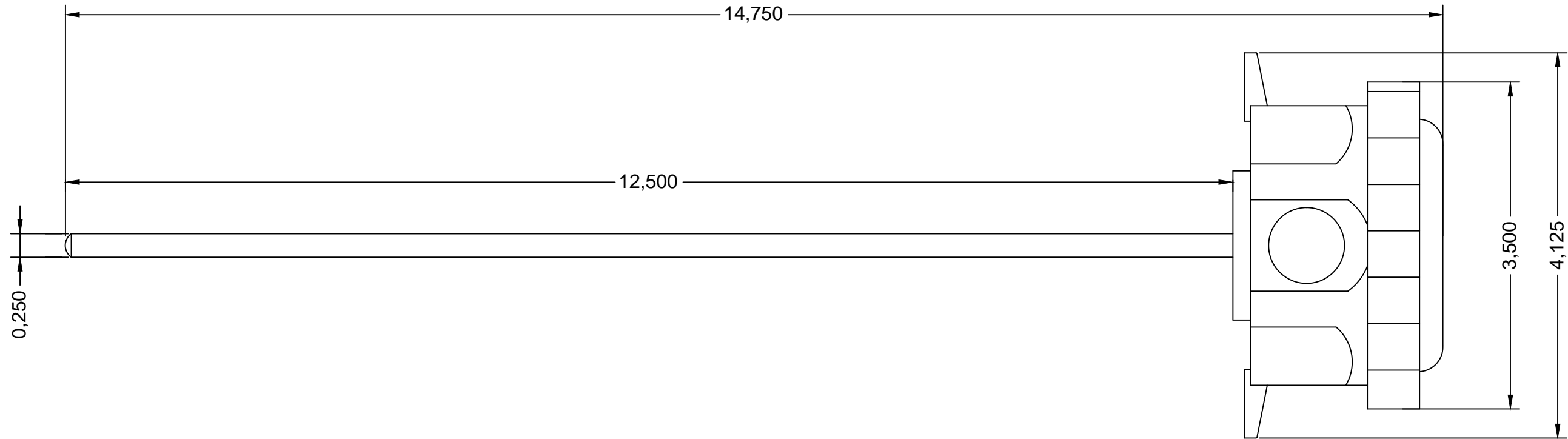


ABS, BRACKET ENCLOSURES



INSTALLATION:
 THE SENSOR IS INSTALLED THROUGH A 1/4" HOLE IN
 THE SIDE OF THE DUCT TO MONITOR A SINGLE POINT
 TEMPERATURE WITHIN THE DUCT.

STANDARD LENGTH: 12.5"
 OPERATION TEMPERATURE RANGE: -20 TO 105 °C
 (-4 TO 221 °F)
 CABLE TYPE : PVC INSULATED, PARALLEL BONDED
 (100OHMS, IC SENSORS-FT-4)
 WIRING CONNECTIONS: PIG TAIL (2 WIRE)
 ENCLOSURE : ABS
 SENSOR TYPES : 10,000 Ω TYPE 2 ± .2°C AT 25°C
 (±32.40 TO 77°F)

-	----	07
-	----	06
-	----	05
-	----	04
-	----	03
-	----	02
2014-12-01	Update Logo & Adress	01
DATE	DESCRIPTION	REV.

SYSTEM :
REFRIGERATION

AUTOMATISATION / CONTROL :



Parker
 Micro Thermo Technologies™
 12855 Rue Brault, Mirabel
 Quebec, Canada J7J 0C4
 Tel: (450) 668-3033
 Fax: (450) 668-2695

TITLE:
TEMPERATURE BOX PROBE

PART#:
023-0159

Drawn By : G.Q.	Designed By : L.M.	Approved By : A.H.	Revision : 01
Scale : N.T.S	Date : 2004-08-31	File Name : S-006 PROBE 023-0159	