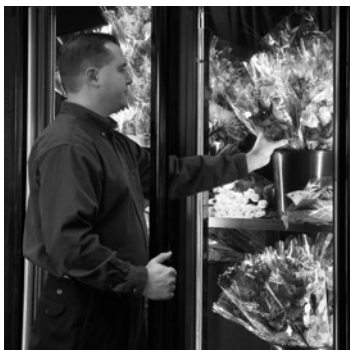
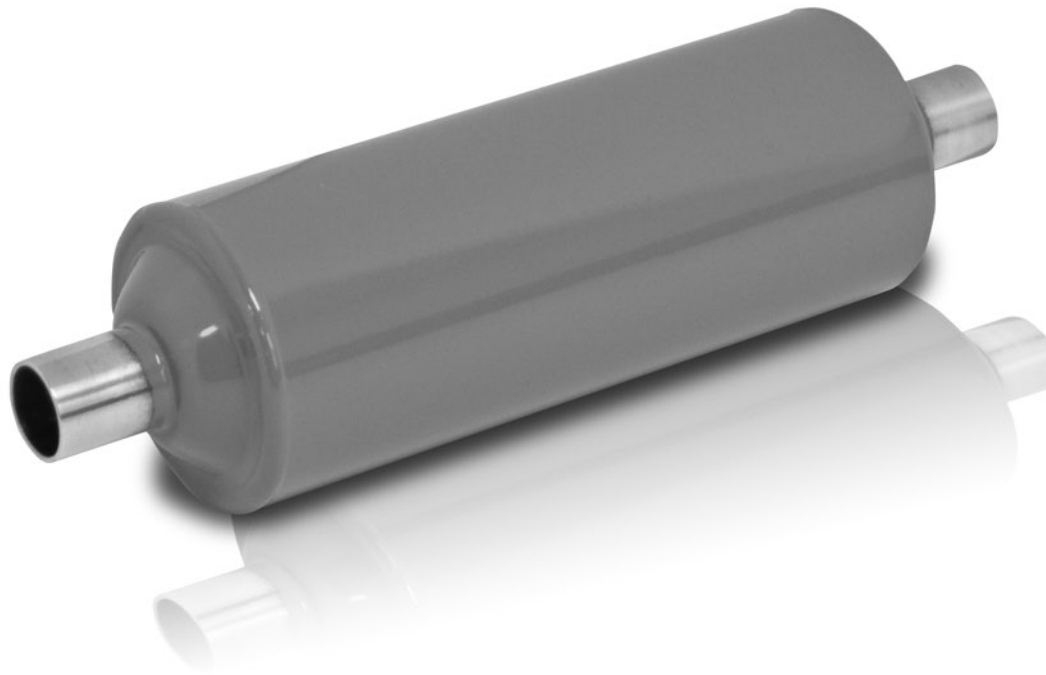




aerospace
climate control
electromechanical
filtration
fluid & gas handling
hydraulics
pneumatics
process control
sealing & shielding



*Expanded Line-Up with
Improved Capacities*



Reversible Heat Pump Filter-Driers

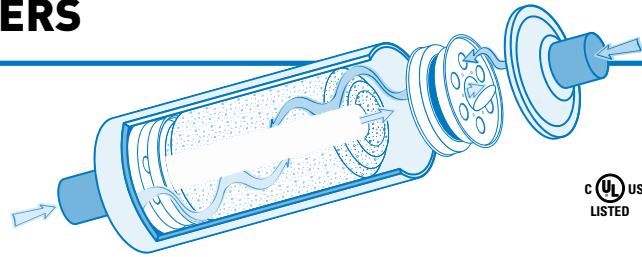
Bulletin 40-10-8, January 2009



ENGINEERING YOUR SUCCESS.



REVERSIBLE HEAT PUMP FILTER-DRIERS



Design Features

- New product line-up with enhanced flow capacities deliver system protection solutions for today's system sizes.
- Filter-drier operates in either flow direction with low pressure drop.
- Rugged metal check valve designed for maximum flow capacity.
- Sporlan dependable molded core for maximum filtration ability. When flow reverses, dirt already collected remains in the filter-drier.
- Carefully engineered desiccant formulations for new system and system clean-up for all commercially available HCFC and HFC refrigerant/lubricant combinations.
- HPC-160 and HPC-300 Series incorporate the largest core size available in the industry per filter-drier type. A larger molded core provides superior performance, and is especially advantageous for R-410A/POE lubricant systems.
- Catch-All® shells are epoxy powder coated to prevent corrosion even in the most adverse conditions.
- Shells listed by Underwriters' Laboratories for 650 psig for R-410A systems.

Specifications – For New Installations

TYPE NUMBER	CONNECTION SIZE Inches	SELECTION RECOMMEND. Tons	DIMENSIONS		SPECIFICATIONS											
			OVERALL LENGTH Inches	DIA. Inches	FLOW CAPACITY Tons @ 1 psi ΔP			WATER CAPACITY						LIQUID CAPACITY Ounces (wt.) @ 100°F		
					R-22	R-407C	R-410A	R-22 Drops at 60 ppm		R-407C Drops at 50 ppm		R-410A Drops at 50 ppm		R-22	R-407C	R-410A
HPC-103	3/8 SAE Flare	1 – 5	6.75	3.0	5.0	4.6	4.9	215	176	181	60	94	70	12.2	10.7	10.6
HPC-103-S	3/8 ODF Solder		5.88		5.5	5.1	5.4									
HPC-104	1/2 SAE Flare		6.94		8.3	7.6	8.1									
HPC-104-S	1/2 ODF Solder		6.00		8.9	8.2	8.7									
HPC-105	5/8 SAE Flare		7.25		10.2	9.4	10.0									
HPC-105-S	5/8 ODF Solder	6.31	10.8	9.9	10.6											
HPC-163	3/8 SAE Flare	1 – 8	7.78	3.0	5.0	4.6	4.9	364	297	307	100	158	119	14.5	12.7	12.6
HPC-163-S	3/8 ODF Solder		6.92		5.5	5.1	5.4									
HPC-164	1/2 SAE Flare		7.95		8.3	7.6	8.1									
HPC-164-S	1/2 ODF Solder		7.07		8.9	8.2	8.7									
HPC-165	5/8 SAE Flare		8.28		10.2	9.4	10.0									
HPC-165-S	5/8 ODF Solder	7.35	10.8	9.9	10.6											
HPC-304	1/2 SAE Flare	8 – 20	11.08	3.0	8.7	8.0	8.5	696	567	586	189	302	227	19.7	17.3	17.2
HPC-304-S	1/2 ODF Solder		10.18		9.3	8.6	9.1									
HPC-305	5/8 SAE Flare		11.38		9.9	9.1	9.7									
HPC-305-S	5/8 ODF Solder		10.42		10.5	9.7	10.3									
HPC-306-S	3/4 ODF Solder		10.86		11.0	10.1	10.8									
HPC-307-S	7/8 ODF Solder	11.02	11.4	10.5	11.2											

Specifications – For Clean-Up After Burnout

TYPE NUMBER	CONNECTION SIZE Inches	SELECTION RECOMMEND. Tons	DIMENSIONS		SPECIFICATIONS											
			OVERALL LENGTH Inches	DIA. Inches	FLOW CAPACITY Tons @ 1 psi ΔP			WATER CAPACITY						LIQUID CAPACITY Ounces (wt.) @ 100°F		
					R-22	R-407C	R-410A	R-22 Drops at 60 ppm		R-407C Drops at 50 ppm		R-410A Drops at 50 ppm		R-22	R-407C	R-410A
HPC-163-HH	3/8 SAE Flare	1 – 8	7.78	3.0	4.8	4.4	4.7	93	81	90	88	69	100	14.5	12.7	12.6
HPC-163-S-HH	3/8 ODF Solder		6.92		5.2	4.8	5.1									
HPC-164-HH	1/2 SAE Flare		7.95		7.9	7.3	7.7									
HPC-164-S-HH	1/2 ODF Solder		7.07		8.5	7.8	8.3									
HPC-165-HH	5/8 SAE Flare		8.28		9.7	8.9	9.5									
HPC-165-S-HH	5/8 ODF Solder	7.35	10.3	9.5	10.1											
HPC-304-HH	1/2 SAE Flare	8 – 20	11.08	3.0	8.3	7.6	8.1	167	119	161	88	123	109	19.7	17.3	17.2
HPC-304-S-HH	1/2 ODF Solder		10.18		8.8	8.1	8.6									
HPC-305-HH	5/8 SAE Flare		11.38		9.4	8.6	9.2									
HPC-305-S-HH	5/8 ODF Solder		10.42		10.8	9.2	9.8									
HPC-307-S-HH	7/8 ODF Solder		11.02		10.8	9.9	10.6									

HPC-100 Series – Core volume is 10 cubic inches. Core surface filtering area is 18 sq. inches. Maximum rated pressure is 650 psig.
HPC-160 Series – Core volume is 14 cubic inches. Core surface filtering area is 26 sq. inches. Maximum rated pressure is 650 psig.
HPC-300 Series – Core volume is 30 cubic inches. Core surface filtering area is 53 sq. inches. Maximum rated pressure is 650 psig.
UL and ULc Listed – Guide-SMGT-File No. SA-1756A & B.

For complete information on the Catch-All Filter-Drier see your Sporlan Wholesaler, our website at www.sporlan.com, or write Sporlan and request Bulletin 40-10.

