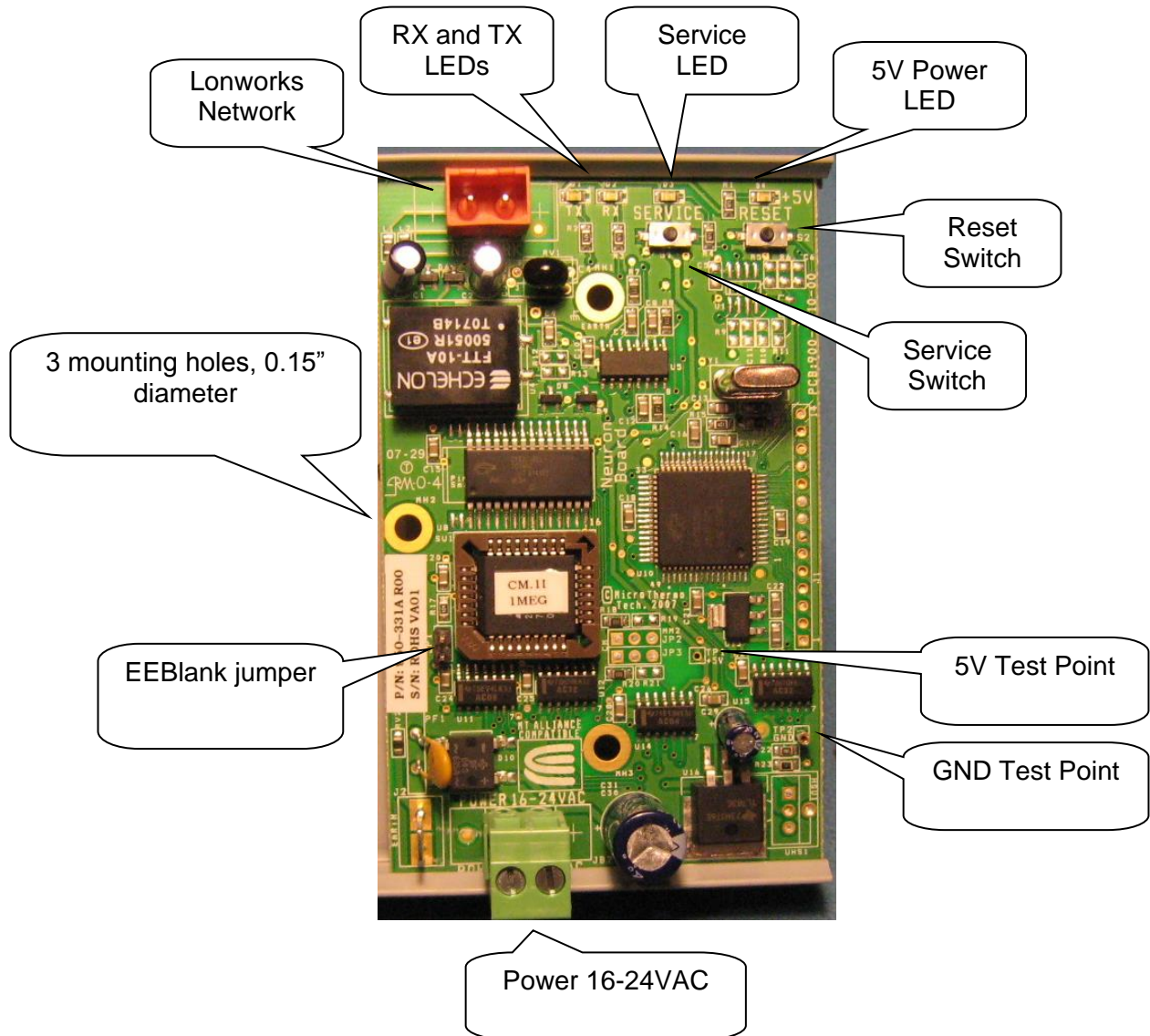


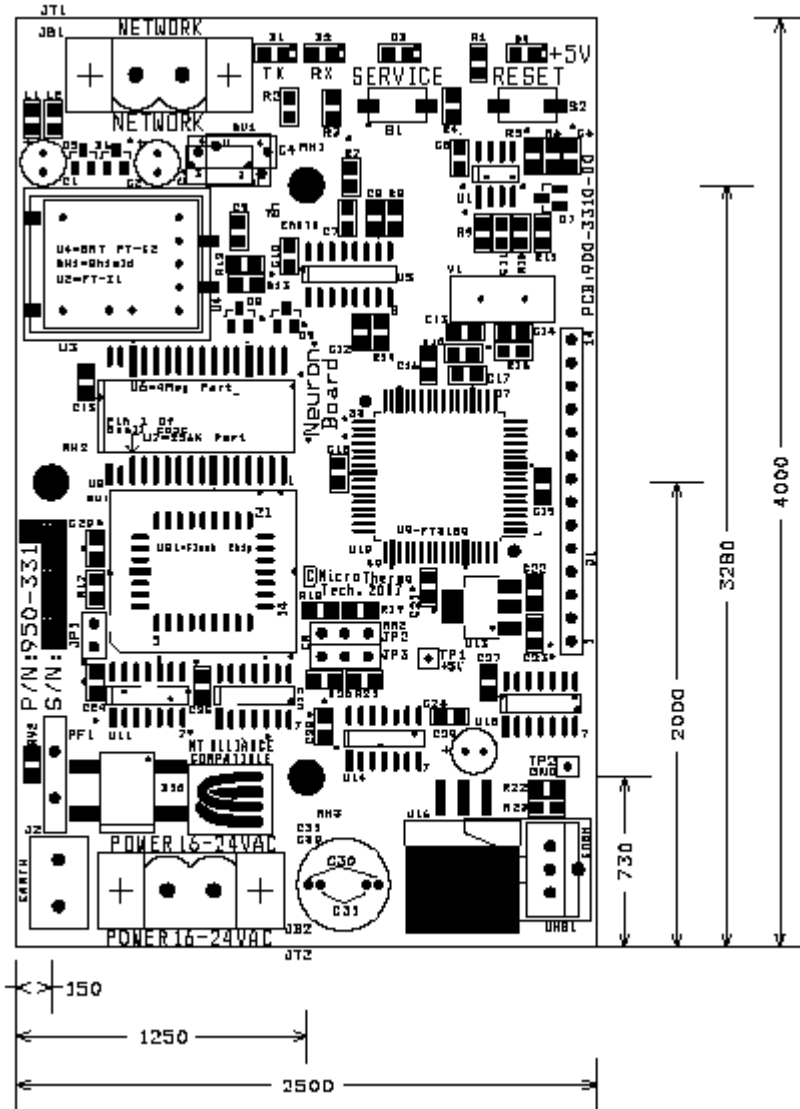
MT-331A Neuron Board Specification Press Released

The Neuron Board may be used as a stand alone scheduler node for lighting and HVAC nodes in any MTAlliance version. It can also replace a MT-CKT node in applications where the output relays are not required.



Ordering information

- 950-331A Neuron Board alone
- 962-331A Neuron Board on snaptrack



Mounting hole positions

Power Requirements: 16 to 24VAC $\pm 10\%$
 Current: 120mA @ 24VAC (3VA) or 120mA @ 16VAC (2VA)
 Operating temperature: 0-70°C
 RoHS compliant

Application examples:

- Weight State node
- Decode State node
- MT-CKT board to use with EEPB boards off time defrost
- Grafset Sequencer board
- Or other CM applications...