



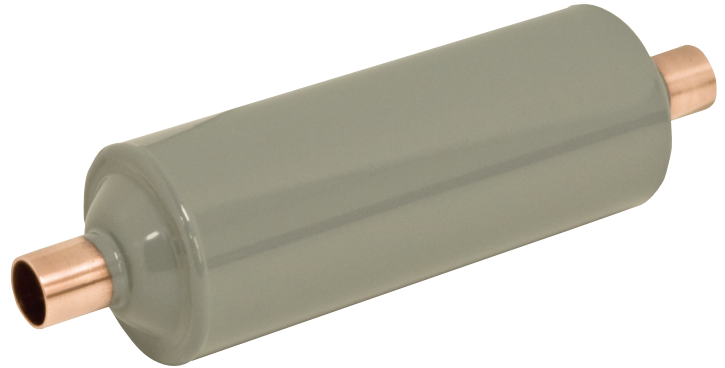
REVERSIBLE HEAT PUMP FILTER-DRIERS

Form 40-257
May 2008

The
choice for
410A

Design Features

- Expanded line-up for heat pump applications up to 20 tons
- Higher flow capacities at low pressure drop for all models
- Famous Sporlan porous molded core designed for ultimate contaminant removal ability
- Thoroughly evaluated internal assembly maximizes filtration ability. When flow direction reverses, dirt already collected remains in the filter-drier
- Catch-Alls rated for 650 psig and qualified for R-22, R-410A and R-407C
- HPC-160-HH Series for system clean-up rated 1-8 tons
- HPC-300-HH Series for system clean-up rated 8-20 tons



**AVAILABLE
AUGUST 2008**

TYPE NUMBER	FITTING TYPE	SELECTION RECOMMENDATIONS R-22, R-410A, & R-407C	
		OEM	FIELD BUILT-UP SYSTEM
HPC-103	3/8 SAE Flare	1 - 5 tons	1 - 5 tons
HPC-103-S	3/8 ODF Solder		
HPC-104	1/2 SAE Flare	5 - 10 tons	1 - 8 tons
HPC-104-S	1/2 ODF Solder		
HPC-163	3/8 SAE Flare		
HPC-163-S	3/8 ODF Solder		
HPC-164	1/2 SAE Flare	10 - 20 tons	8 - 20 tons
HPC-164-S	1/2 ODF Solder		
HPC-165	5/8 SAE Flare		
HPC-165-S	5/8 ODF Solder		
HPC-304	1/2 SAE Flare		
HPC-304-S	1/2 ODF Solder		
HPC-305	5/8 SAE Flare		
HPC-305-S	5/8 ODF Solder		
HPC-307-S	7/8 ODF Solder		

It's the core that counts!

